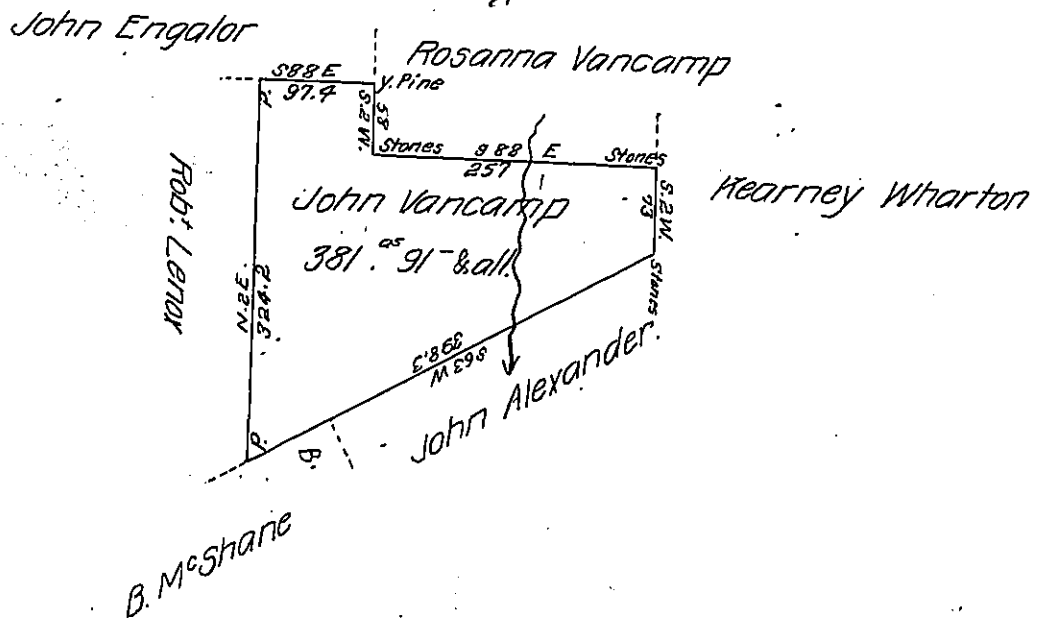


Pg. 222 -



Draft of a tract of unimproved land, Situate in the township of Hanover in the County of Luzerne - adjoining lands, of Rosannah Vancamp & others containing three hundred eighty one acres & ninety one perches of land besides the usual allowance of 6 pr. Ct. for roads &c. Surveyed for John Vancamp forty or forty one years ago as appears by blocking the line trees upon the ground - And resurveyed the 8<sup>th</sup> day of May 1839. by virtue of his warrant dated the 8<sup>th</sup> day of January 1793.

To Jacob Sallade Esq<sup>r</sup>

Z. H. Stevens D.S.

Surveyor General.

for Luzerne County

Approved & Certified by me this 17<sup>th</sup> Jan<sup>y</sup> 1840

Henry Colt D.S.

IN TESTIMONY that the above is a copy of the original remaining on file in the Department of Internal Affairs of Pennsylvania, made conformably to an Act of Assembly approved the 16th day of February 1833, I have hereunto set my hand and caused the Seal of said Department to be affixed at Harrisburg, this Twenty-first day of May 1907

*Henry Horvick*

Secretary of Internal Affairs.